



Number 72 www.canalwatch.org September 2020

2022 Calendar Contest
See page 2 for details and start snapping those pix!

2021 CANAL WATCH CALENDAR
The brand new 2021 D&R Canal Calendar is now available. Supplies are limited, so order your copy now.
To purchase a copy, please email Linda Barth at barth-linda123@aol.com and she will arrange for delivery.

12" x 12" -- \$20, with all proceeds going to the D&R Canal Watch to purchase items for the park.

The D&R Canal Watch
P.O. Box 2
Rocky Hill, New Jersey 08553

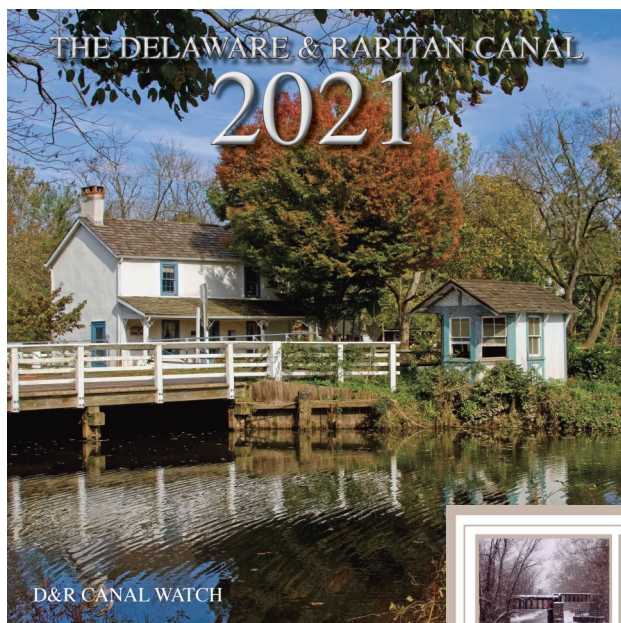
908-240-0488

www.canalwatch.org
<https://www.facebook.com/dandrcanalwatch/>

info@canalwatch.org

Board of Trustees
Linda Barth, president
Charles Martin, vice president
Wayne Petko, secretary
Tom Lederer, treasurer
Robert Barth
Roberta Batorsky
Ted Chase
Carl Hemmingsen
Ellen Kaplan
Michael Kaplan
Jeff McVey
Marion Munk
Barbara Ross
Jean Bruno Stremlo
Pamela V'Combe

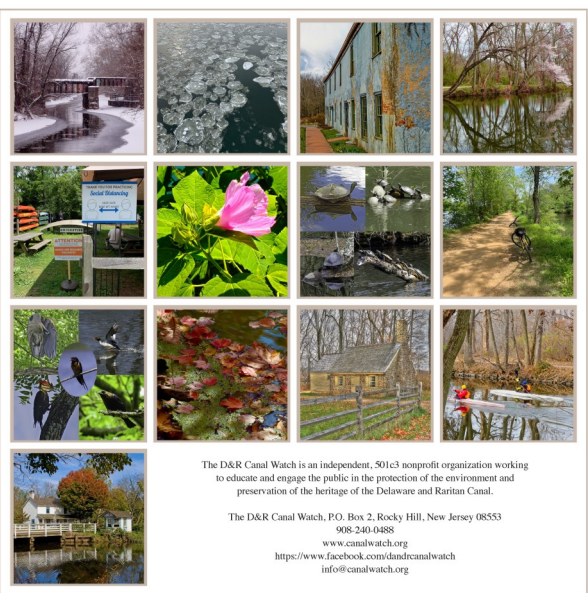
Our Mission
The D&R Canal Watch is an independent, nonprofit organization working to engage the public in the protection of the environment and preservation of the heritage of the D&R Canal.



This lovely full-color calendar features images taken by people who visit the towpath. The photographs include turtles, birds, and plants that thrive in the D&R Canal State Park, as well as boaters, the towpath, and views of the canal in all seasons.

Our calendar is 12" x 12" and includes a map and

a history of the D&R Canal.
The cost is \$20, with all proceeds going to the D&R Canal Watch to purchase items for the park. Supplies are limited, so order your copy now.



2022 D&R Canal Watch calendar:

If you are considering submitting photographs for the 2022 calendar, please note that the themes will be **reflections** and **the workings of the canal** (bridges, locks, spillways, buildings, etc.) or both.

Below are examples, taken by local photographer Ted Settle, showing autumn reflections in the canal just south of South Bound Brook. The photo on the right shows a combination of both themes. At the bottom of the page, Ted has listed suggested locations for taking pictures along the main canal. Submissions will be accepted **AFTER** the first of the year.



The November newsletter will include the rules for the contest. It is highly recommended that entrants **NOT** use cell phone cameras. The judges have found that these images do not work well when enlarged to 12” x 12.”



Suggestions for photography locations:

1. Bordentown, Lock 1 and towpath (about two miles) Take I-295 south to Exit 57, Bordentown; take Route 130 north to Farnsworth Avenue. Turn left onto Farnsworth and drive through town and down the hill. Just before the railroad tracks there are parking spaces on

your right. Park there, walk across the tracks and go to your right along the walkway. (If you are there at low tide you will see the old wooden structure of Lock 1. This is a good spot for some pictures of the old lock; if you see someone at the boat dock, you should ask if you can come onto the boat docks to take some pictures of the lock and lock entrance). Then continue on the path and cross the bridge over Crosswicks Creek. Continue on the path to the canal. There is a bridge over the canal that will take you to the towpath going to your right. However, before going to the towpath, work your way through the growth to your left (be aware of ticks) to get to the entrance to Lock 1; plenty of opportunities for photographs from different angles and of different objects. Then go back to the path and continue past the path going to the bridge along the canal. This will take you to where you can see the remains of the turning basin. If you are there at sunrise, the images of the turning basin are spectacular. Don't forget to enjoy downtown Bordentown while you are there.

2. Going north on Route 1, just after you leave the freeway part (where it joins Business Route 1), move over to the right as quickly as possible and look for Carnegie Road; turn right and drive a short way to the Carnegie Road bridgetender's house. Park and walk north on the towpath for good foliage in the fall.
3. Going farther north along Route 1, just before the canal towpath bridge crosses over Route 1, there is
(continued on page seven)

Canal Watch Volunteers Conduct Boat Launch Clean-up



With the permission of the D&R Canal State Park, volunteers from the Canal Watch have cut back and cleaned up some vegetation along the canal bank at the Demott Lane bridge, off Easton Avenue. The goal of this project is to allow for better kayak and canoe access.

This launching site is popular for a number of boaters and that number will probably grow larger since the current dredging operation blocks the East Millstone playground area and the area north of the water plant between Griggstown and Blackwell Mills.

Chuck and Diana Martin worked to enlarge the launch area, extending it

15-20 feet farther south along the bank, cutting the hypotenuse of the triangle back about 5-10 feet. This will perhaps push back the poison ivy, multiflora rose, Virginia creeper, raspberry/blackberry thorns, and poison hemlock enough to keep people safe while launching their boats.

The volunteers did not remove any trees or saplings and plan to use a pole hedge clipper to do the cutting to prevent the poison ivy from flying everywhere. The Martins will be happy to volunteer to try to keep this area maintained and free of litter and noxious plants for the near future. If you wish to help, contact Chuck at cemart10@gmail.com.



CANAL WATCH ANNUAL MEETING AND ELECTIONS

As you know, we were not able to hold the Canal Watch annual meeting and elections in June, due to the pandemic.

Using this newsletter, we have kept you informed about canal issues, as we would have done in person.

For the election, we ask that members who have paid for 2020 please email Linda Barth (barthlinda123@aol.com) with a yes or no vote for the slate or for specific candidates.

Class of 2022-2023

Theodore Chase (Griggstown)

Jeff McVey (Lambertville)

Barbara Ross (Princeton)

The Next Step for the East Millstone Bridgetender's Station

The partner organizations of the D&R Canal Watch have contributed toward the cost of a conditions assessment for the East Millstone bridgetender's station, which is the small structure next to the bridgetender's home.

The architectural firm of HMR, Inc. has completed the assessment. The next step will be a meeting of the D&R Canal Commission, the State Historic Preservation Office, and State Parks personnel in early August to discuss the project. Then they will forward their response to the Canal Watch.

We are most grateful to our partner groups, the East Millstone Historical Society, the Canal Society of New Jersey, and the Millstone Valley Preservation Coalition, for contributing toward this project. All contributions from friends and members will be gratefully accepted. Thanks to those of you who have already made contributions.

Since our July newsletter, state park personnel have met with representatives of the Office of Resource Development, the NJ Water Supply Authority, the State Historic Preservation Office, and other agencies to discuss the future of this structure.

Four possibilities have been proposed for the station: a) restore it in place; b) push it back closer to the bridgetender's home; c) store it in pieces until a future date; or d) move

it to another site.

The price may be affected by permitting costs, treasury costs, and the need to pay contractors at the prevailing wage, a state requisite.

Two mitigating factors for this project are the future replacement of the bridge on Amwell Road (a DOT project) and the straightening of the road (a Somerset County project).

State park personnel have met with the Somerset County engineering staff to further these discussions.

We will keep you informed as to the progress of these discussions.



In the top picture, the station is the small, white building to the left of the bridgetender's home. You can see its proximity to the bridge.
In the bottom image, the station is unpainted.

CANAL WATCH ACTIVITIES FOR 2020

www.canalwatch.org

www.dandrcanal.com

THE CANAL WATCH ACTIVITIES FOR 2020 HAVE BEEN CANCELLED. ALTHOUGH THE D&R CANAL STATE PARK IS OPEN, OUR BOARD FEELS THAT IT WILL BE CHALLENGING TO SPONSOR WALKS WITH GROUPS OF PEOPLE WHEN DISTANCING IS NECESSARY.

UNTIL SUCH TIME AS A SAFE, TESTED VACCINE HAS BEEN DISTRIBUTED ACROSS THE NATION, WE WILL DISCONTINUE OUR ACTIVITIES FOR 2021 AS WELL. CHECK BACK WITH US LATER IN 2021 BY CLICKING:

<https://canalwatch.org/events/>

If you would like to join DEP's list to receive news of activities sponsored by the park, visit https://public.govdelivery.com/accounts/NJDEP/subscriber/new?qsp=NJDEP_1



Photo by Steven Fry

THE HERON HOUR

on the trail between two waters
horses tread gingerly
around each misted curve

I catch the faintest whiff
of burnished saddles
and I am back with daughters
hardhats in the ring

a frail sun slips
lighting billows of ground-fog
along the fresh-turned fields

oak leaves have crisped here
and the woodbine's turned
it is the hour herons rendezvous
but not tonight

I shall go home
slice autumn's first tart apple

CAROLYN FOOTE EDELMANN

September 1990/1992

The GalleySail Review

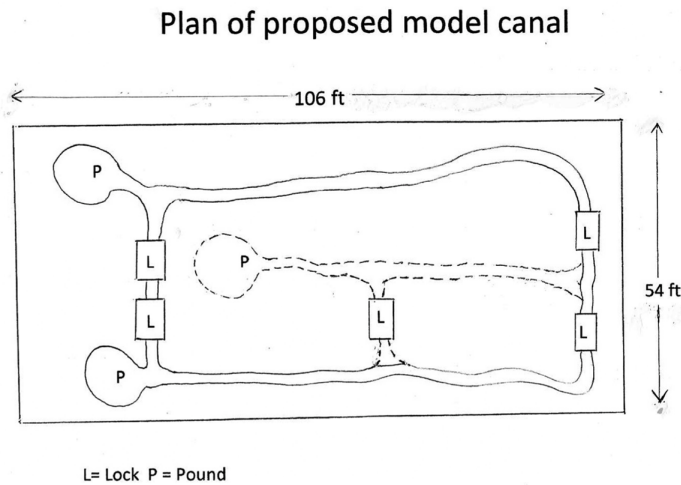
Fall, 1993

Mini Canal Model May Be Near

Pending a few more permissions and final approval from the Holcombe-Jimison Farmstead Museum, a group of volunteers will dig a miniature version of the D&R Canal on the Farmstead property in Delaware Township, just north of Lambertville.

The model would cover an area of 106 ft x 54 ft, consisting of a loop interconnected with five working locks and model battery-powered boats and associated craft. The canal would have a rubber liner covered with bentonite clay; the locks, likely prefabricated off-site, would be made of wood, stone, and cement. The canal would need a depression of 5 inches with 4" above grade banks. No other significant trenching is envisaged.

Three or four individuals would be involved in the construction. If you are interested in helping to create this canal, please contact Michael Bird at michaelgbird@gmail.com.



D&R Canal Watch 2021 Membership Renewal Form

Membership year: January 1 to December 31

Nonprofit Org \$10 _____ Individual \$15 _____ Family \$25 _____ Organization \$40 _____
 Supporter \$100 _____ Patron \$250 _____ Business member \$500 _____ Benefactor \$1000 _____

Name _____

Address _____

City _____ State _____ Zip _____

Phone(s) _____

Email address _____

Please send this form and your check, payable to the D&R Canal Watch, to D&R Canal Watch, P.O. Box 2, Rocky Hill, New Jersey 08553-0002.

For reasons of fiscal and environmental responsibility, newsletters will be posted on the Canal Watch website, www.canalwatch.org, and emailed to members for whom we have email addresses. If you require a paper copy, please check here _____.

a place to park on the right. Walk south on the towpath; a lot of foliage; also often a Great Blue Heron.

4. Going still farther north on Route 1, take Quakerbridge Road west (make sure you stay on Quakerbridge Road). It makes a sharp right turn. At that point is the Port Mercer bridgetender's house. There is parking on the left after you drive over the canal.

5. Go back to Route 1 and continue north. After crossing the Millstone River, exit Route 1 just north of the new medical center. This is an exit that will permit you to make a U-turn and head south on Route 1. Take the first exit to Mapleton Road. You will see the Millstone Aqueduct on your left. Turn left into a parking area. This is a very special area for all sorts of photography. Plan to spend some time here exploring different parts of this area. Cross the canal and then walk across the aqueduct to your left; you can follow the towpath along Lake Carnegie to Harrison Street.

6. Leaving the parking lot, turn left and continue on Mapleton Road to the stoplight. Turn left to continue on Mapleton Road. At the traffic light at Route 27 in Kingston, turn left onto Route 27. At the bottom of the hill, turn left and then right (over the canal) and park here. This is Kingston Lock 8 and the locktender's house. It is worth taking the time to walk down the towpath to the Carnegie Lake dam. Walk out on the dam as far as you can and then look to your right. You will see the historic red mill. You can also walk farther down the road you entered on and see the mill up close.

7. Go back to Route 27 and turn right. At the top of the hill turn left at the light onto Church Street. Go to the end of this road and turn left onto Laurel Avenue. Go straight at the next traffic light; this will put you on Canal Road, which you can follow all the way to East Millstone. Along the way will be Lock 9; 0.7 mile farther north is the Griggstown bridgetender's house and the Mule Tenders Barracks on Griggstown Causeway. The bridgetender's house is also the visitor center for the Millstone Valley Scenic Byway. Continue north for 3½ miles to Blackwells Mills Causeway. (Note the left/right jog at Suydam Road.) At the corner is the Blackwells Mills bridgetender's house. Both Blackwells Mills and Griggstown are worth a stop for photographs. Late afternoon is best. At the Blackwells Mills site, if you walk south on the towpath a short distance you will come to the Six Mile Run culvert (Six Mile Run is a stream that flows under the canal at this point). If you look closely, you will see a faint trail so you can work your way down to the Six Mile Run where it flows into the Millstone River—well worth the effort, especially for reflective images of the large tree growing on the edge of Six Mile Run, and images looking back at the culvert.

8. Continue on Canal Road north of Blackwells Mills. When Canal Road curves sharply to the right as it goes uphill, turn left on Market Street in East Millstone. At the end of the road, turn right onto Amwell Road and go to the next traffic light. Turn left onto Mettlers Road and continue through Colonial Park until you come to Schoolhouse Road. Turn right and then left at Randolph Road. Take Randolph Road to Weston Canal Road. Turn left on Weston Canal Road. You can either drive to Zarephath, turn right where you see the bridgetender's house and park in this area, or, **my preference, go a short way and after you go past a pedestrian bridge over the canal (on your right), you will see a large paved area on your left where you can turn around. Turn around and come back to an area where just a few cars can pull off the road on your right. Park there, walk along the road to where the bridge crosses over the canal, carefully cross Weston Canal Road and cross the bridge. As you cross the bridge, look to your left.** You will see lock 10. Looking both ways while on this bridge is a good place for foliage and winter scenes. Continue over the bridge. Walk to your left to Lock 10 and the locktender's house. On your way back, continue past the bridge and walk along the towpath. You will find interesting scenes on both the Raritan River and the canal. Across the Raritan River, high in the trees, there is a Bald Eagle's nest that has been occupied for the last several years.

9. Outlet locks at New Brunswick. You have to drive through New Brunswick on Route 18 heading south. Stay right and take the exit for Paulus Blvd (on your right as you go up the hill after New Brunswick). Exit here to U-turn, turning left to cross Route 18 and head back toward New Brunswick. Take the first exit. It will say Rutgers University Boat House/Boyd Park. You can drive down into this area and park and then walk around the double outlet locks. If you are there at sunrise, there are excellent views of the river and various bridges over the Raritan River as it flows on to its final destination at Raritan Bay.



The D&R Canal Watch is asking for your support for our activities that protect, maintain, and promote the recreational, historical, aesthetic, and environmental qualities of the Delaware & Raritan Canal State Park. Over the past years, the Canal Watch has:

- Led history walks along both the main canal and the feeder, pointing out historic structures and Light Rail study tours
- Led history bike rides along the main canal and star-gazing events
- Sponsored bird watching walks along the main canal and bilingual nature walks
- Sponsored lectures on topics such as “The Role of the Delaware and Raritan Canal in the Growth of Trenton’s Industrial Potteries,” “The Operation of the Joint Companies and the Interrelationship of the canal with the state’s first railroad,” “The Roebling Story,” “Photography Along the Delaware and Raritan Canal State Park: Treasure in Central New Jersey,” “Meet Ashbel Welch, the second chief engineer of the Delaware and Raritan Canal,” and Jim Amon on how the canal and the park changed during his tenure with the commission.
- Purchased gifts that the park budget could not provide. These include a digital camera, seven picnic tables, several benches, a laptop computer and software, a desktop computer, an LED projector, an inflatable screen for outdoor viewing of videos, a subscription to the Meetup website, a scanner, printer ink, a water testing kit, an external computer drive, lumber for canoe dock at Griggstown, folding tables and twenty chairs for Bulls Island, development of a new park website, and professional courses for the maintenance staff.
- Canal interpretive signage at locks and spillways
- Activities in 2009 marking the 175th anniversary of the opening of the Delaware and Raritan Canal. These included “Meet the Canal Authors Day” and “The D&R Canal: Yesterday, Today, Tomorrow,” by Richard Hunter” walks, bike rides, canoe and kayak rides, “Hands Along the Canal,” and proclamations from our legislature.
- Examination of Lock 9 to determine the feasibility of reopening the lock to navigation
- Post-flood cleaning of canal structures in Griggstown, Zarephath, and East Millstone
- Painting over graffiti in East Millstone
- Repair of shutters on the East Millstone bridgetender’s home
- Straightening and painting of the outhouse at the East Millstone bridgetender’s home
- Staffing the East Millstone bridgetender’s home during the village’s Canalfest in October
- A photographic exhibit of the homes of bridgetenders and locktenders.
- Services of an information technology consultant for the park’s computers
- Funded classes to certify maintenance staff in small motor repair, applying herbicides, etc.
- Contacted legislators and the governor’s office to keep the parks open and retain the commission
- Facilitated the mothballing of an empty bridgetender’s home by buying lumber and painting the windows.
- Installed Kaya-Arms on docks to facilitate entering and exiting kayaks
- Bike repair station outside the office at Bull’s Island, and much more.

Class of 2022-2023

Theodore Chase (Griggstown)
Jeff McVey (Lambertville)
Barbara Ross (Princeton)

Class of 2020-2021

Tom Lederer (Princeton), publicity chair
Roberta Batorsky, Bordentown
Carl Hemmingsen, Bordentown
Marion Munk (Piscataway)
Wayne Petko (South Bound Brook)

Class of 2021-2022

Linda Barth (Somerville)
Robert Barth (Somerville)
Michael Kaplan (Griggstown)
Ellen Kaplan (Griggstown)
Pamela V'Combe (Trenton), activities chair
Charles Martin (Franklin Township)

Officers

President, Linda Barth
Vice President, Charles Martin
Secretary, Wayne Petko
Treasurer, Tom Lederer

LOCAL EVENTS YOU MAY WISH TO ATTEND

Now through November 8, The Lambertville Historical Society, in conjunction with the Delaware River Towns Chamber of Commerce and the City of Lambertville, presents an all-outdoor, self-guided walking tour and exhibit called

“LAMBERTVILLE THEN AND NOW.”

Lambertville, NJ was incorporated as a town in 1849 and as a city in 1872. From the mid-1800s to the early 1900s the ferry, the canal, the railroad and the Old York Road stage-coach route all contributed to the development and industrialization of Lambertville.

Visit Lambertville and walk through the city to view 20 poster-sized historic images in windows and in front of buildings, located at the sites where the historic images were taken. Become immersed in what it was like to be in Lambertville during its industrial heyday. The exhibit runs through Sunday, November 8, 2020.

These historic exterior images dating from the mid-1800s to the early 1900s include factory buildings, mansions, a theatre, stores, halls, and more.

If you have a QR-Code reader app on your mobile device, you will be able to use it to read more about the history of each site. Or, you can type the web page address shown on the poster into your mobile web browser to do the same.

Trenton City Museum at Ellarslie Reopens with New Exhibitions

THE CONVERSATION CONTINUES: Visual Language / Difference / Common Ground, in the Museum and Online September 26 through November 15 -- Curated by Madelaine Shellaby | Featuring 40 abstract works by 16 artists
ON THE FOREFRONT: Trenton’s Junior 1, 1916, in the Museum and Online -- Curated by Karl J. Flesch | Featuring historic artifacts and memorabilia and photographs by Trenton photographers J. Carlos Vargas and Robert J. Sammons

Tewksbury Historical Society to Hold Tag Sales October 17 and November 7

The Tewksbury Historical Society will hold Tag Sales on Saturdays, Oct. 17, and Nov. 7, 8 a.m.- 4 p.m., at the Oldwick Carriage House, 5 James St., Oldwick, 08858. The sales will be held rain or shine.

The society will sell quality items, which are very clean and in working operation. Antiques, furniture, china, dishes, housewares, garden items, costume jewelry and linens will be among the available merchandise. In compliance with COVID-19 restrictions, Social Distancing will be observed, and patrons and staff must wear face coverings.

Due to COVID-19 restrictions donations will be accepted on a limited basis by appointment only at the Carriage House on a Saturday in October. To reserve a Donation Time Slot and to get details regarding acceptable items and donation procedures call 908-832-6734 and leave your name and number. Someone will return your call. Please be aware that all donations will be thoroughly inspected, and non-accepted items must be retained by the donor. Ensure all items are washed, no chips or cracks, usable and easily visible for inspection – do not tightly wrap items.

The Red Mill Museum Village in Clinton invites you to join with them on October 11, 2020 at 12:30 p.m. as they celebrate the installation of the **brand new waterwheel!** The wheel has not operated for several years, but a recent fund-raising effort, “Save the Wheel,” has funded this restoration.

